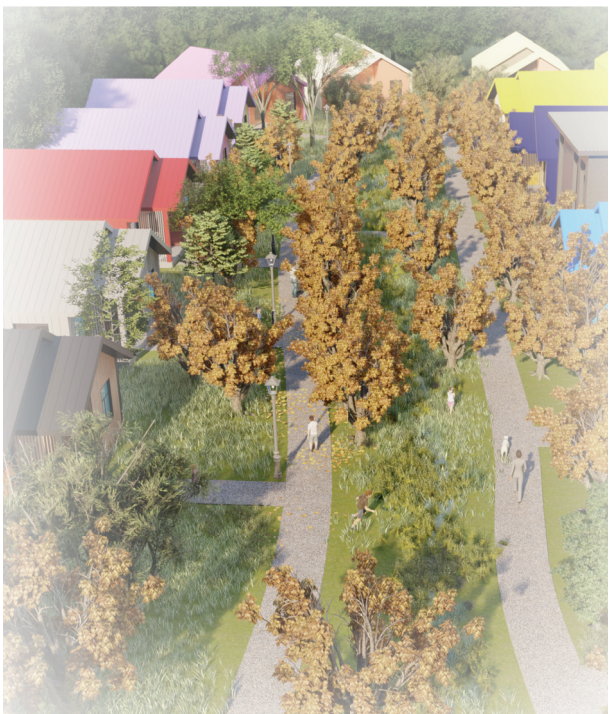
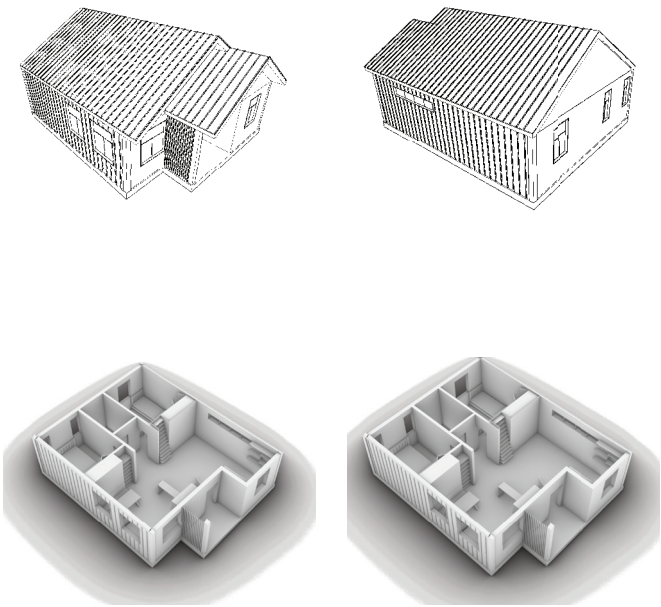


# SILVERTON WETLAND HOUSE

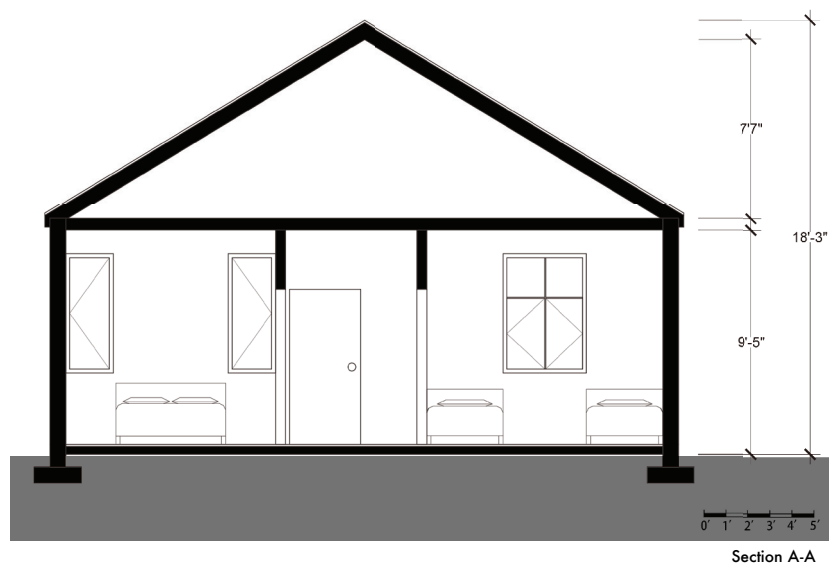
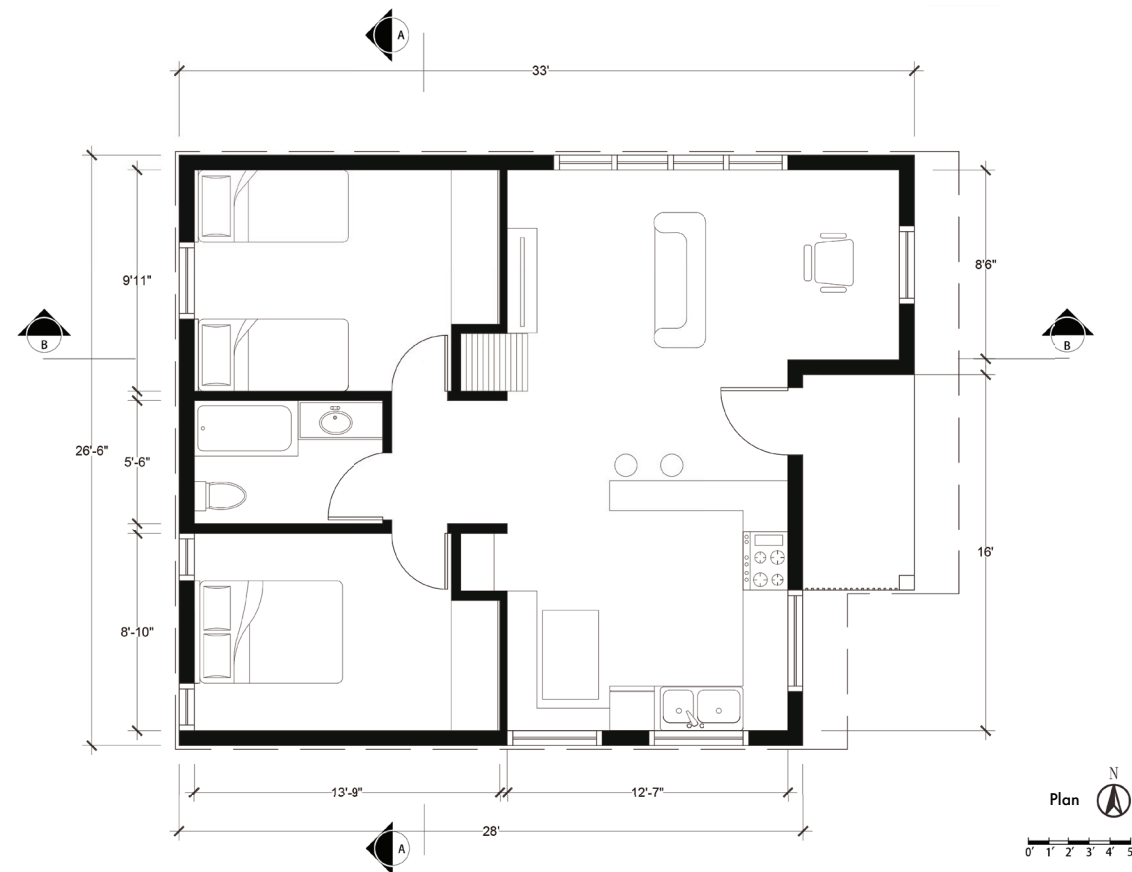


## Description

The wetland house cottage cluster intends to provide housing for Silverton to meet its growing housing needs and ease the housing difficulties of low-income groups. The site is south of the Silverton dog park. There is a wetland that has not been developed and there is a drainage channel passing through. There are churches, elementary schools. Skate parks and a senior center nearby, and it has a very wide view and beautiful scenery. Therefore, it is very suitable to build a new Cottage Cluster.

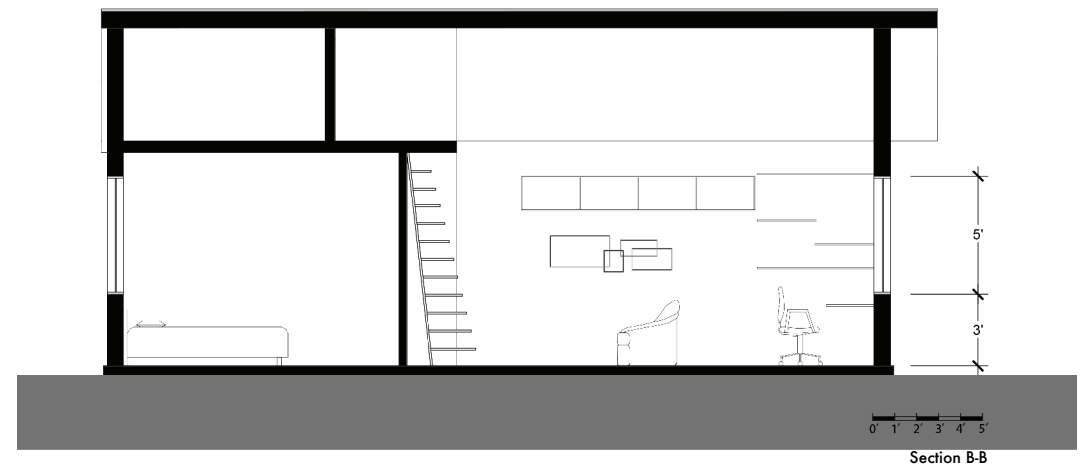






### Materials

The side of the house and the roof utilize the same material – standing seam metal, because it is an affordable and common material, and also create a feeling of continuity. The front and back of the house are wood and can be painted to make differentiations between house.



NATURE WOOD /VERTICAL SIDING



NATURE WOOD/HORIZONTAL SIDING



BLACK SIDING



RED/BLUE SIDING



GREEN/ORANGE SIDING



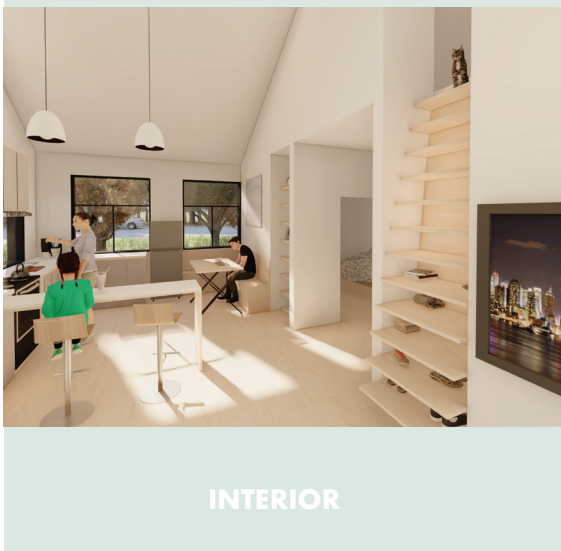
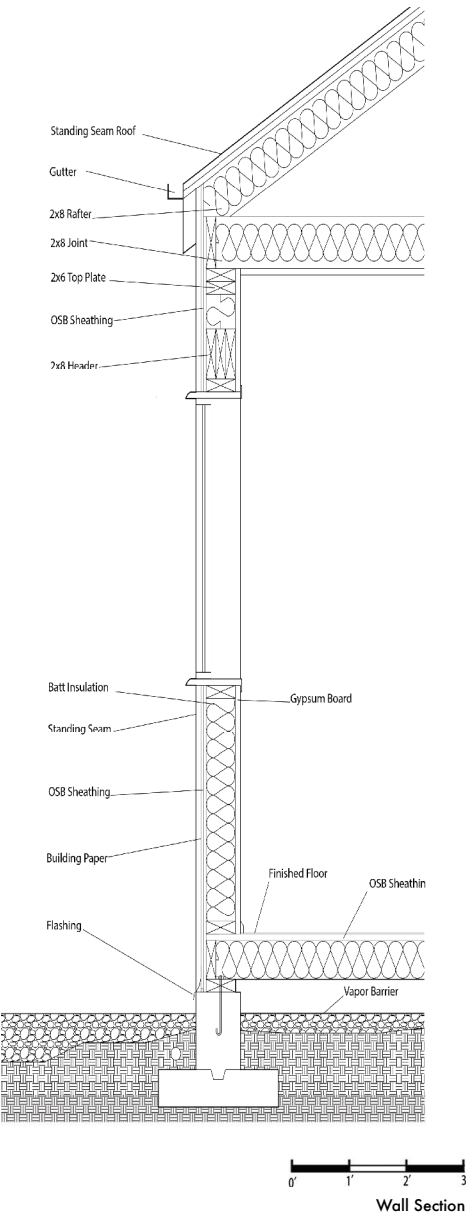
WHITE SIDING



Design

Since the purpose of the building is affordable housing, it is very important to control cost. This design utilizes a simple gable house shape. The plan simply divides the house into private and public spaces and provides a space for work and study. A shelf in the living room can become a ladder to access storage space in the loft. Considering a family with

two children, the two bedrooms are about the same size. Therefore, the master bedroom and the second bedroom can be changed according to the family needs. The interior space occupies 792 square feet.



INTERIOR



EXTERIOR