

# SUNNY CAMP



## Introduction

The cottage cluster is designed for low-income families with their participation in the construction process to lower the cost. Each unit, arranged in 800 square feet maximum, will include 4 decent bedrooms with the loft design maximizing the dwelling space. The design goal is to create a cozy home with the openings bring in sunlight to get the human body to feel recovered.

## Cabinet Assemblage

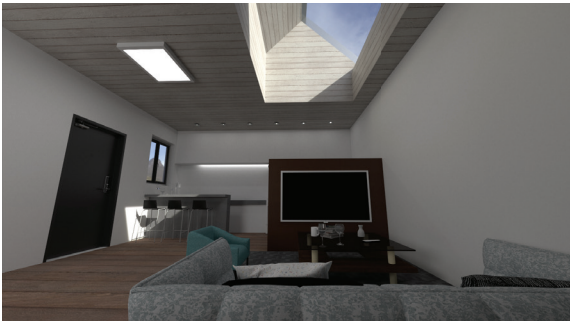


Thinking of what living and housing mean in contemporary society, I try to explain this in terms of the two different energy orientations when the human body is indoors and outdoors. When the human body is outdoors, the energy is radiating out as the form of sound waves when you are making a speech, or as you are working out, or as you are participating in an event, etc. When you back home, you are taking energy back

through eating, sleeping. You take a shower and get yourself recovered. The lower cabinet represents outdoors with the glass of water represents the human body for the reason that over 60% human body is made by water. The books symbolize education which raises one's horizon. Wood sticks stand for obstacles and they are partial "comeover" as experience helps the "human body" reaching a higher position. While the upper cabinet covered by wallpaper with carpet on the "floor" creates this cozy feeling as "home". Batteries are energies and they are serving in a bowl that means these are energies for humans but not a machine. The toy on the left stands for the individual moment you will need at home to find yourself by exploring what you interested in. There is sunlight coming down, and it goes through "home" into the "human body" and eventually radiating out to the outdoor environment.

## Perspectives/Vignettes

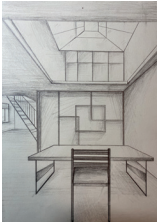
Using the idea of taking energy as a design driver, the series of vignettes came out are different kinds of openings as my design goals. All of those ideas have been blended in the final design to some extent.



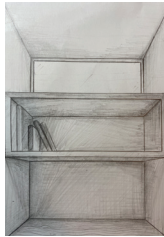
## Kitchen&Living Room

Considering the building envelope efficiency, the ceiling is as low as 8 feet 1 inches. The use of sunk-living room cooperating with the lightwell to make the small space appear larger and reduce the oppression in terms of visual experience.

To lower the cost, another option has the sunk floor reduced, which avoids the expensive structural system in the foundation but keeps the lightwell pops up. The hidden lights behind the cupboards going through the mini-bar and kitchen also give the layer of this space.



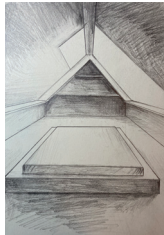
The bathroom has been defined separately into two parts. The beginning part has lower ceiling to create the enclosure feeling. The ceiling will go all the way up to roof in the shower room with a lightwell bringing sunlight in.



This vignette became the idea of using “awkward” little space underneath the staircase as a studying moment, the staircase is also providing storage value as a bookshelf.

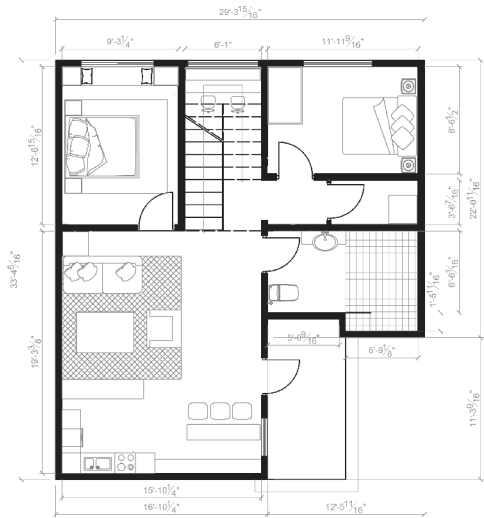


In the main bedroom, this design combines furniture and opening. The coach right attaching to the window is also cabinets

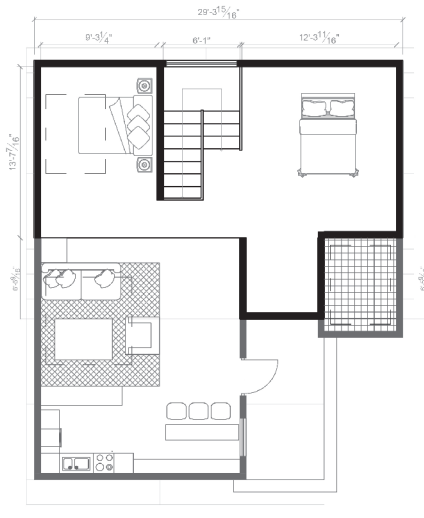


These two potentially kids’ bedrooms are taking the clear gable roof in the loft to create the feeling of camping.

# Floor Plans

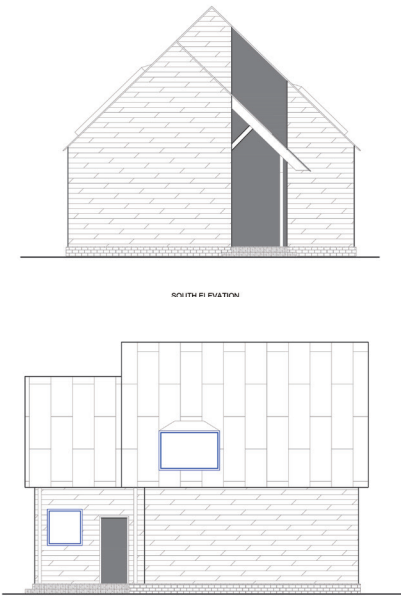
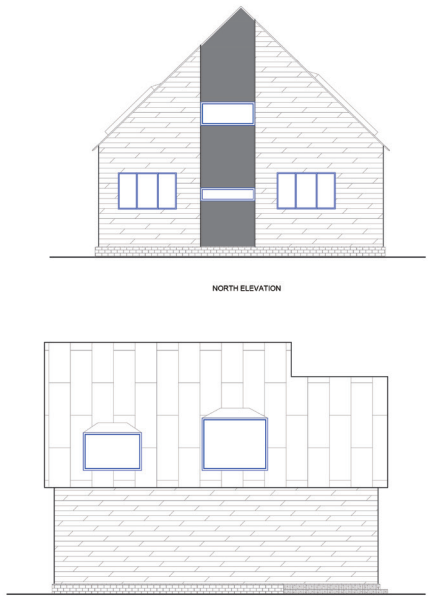


FIRST FLOOR PLAN

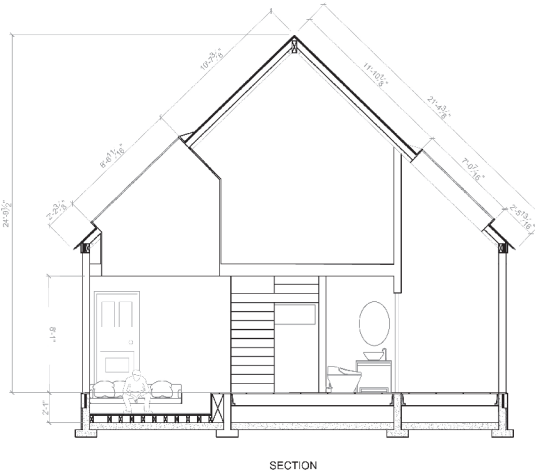


LOFT PLAN

# Elevations



# Section



# Wall Section

