

The Slat House



Duplex Front Elevation, with alternate windows

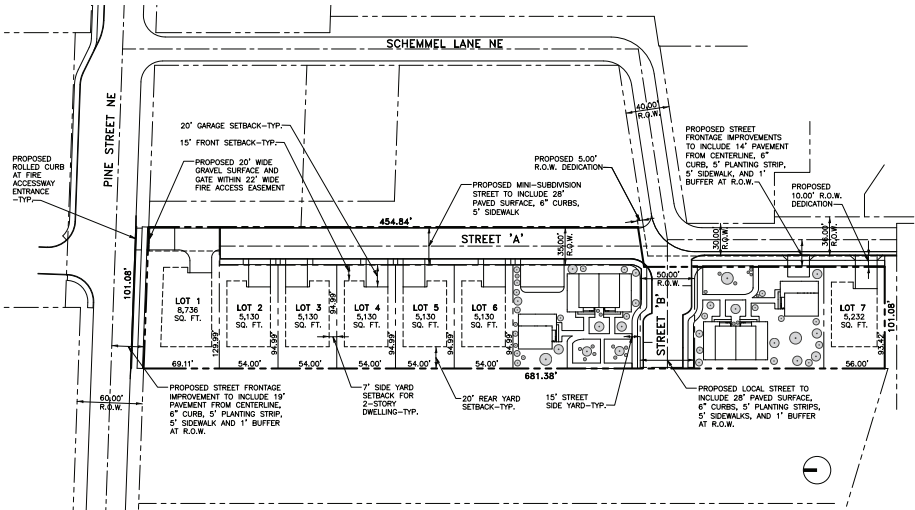


Front Elevation, with alternate windows

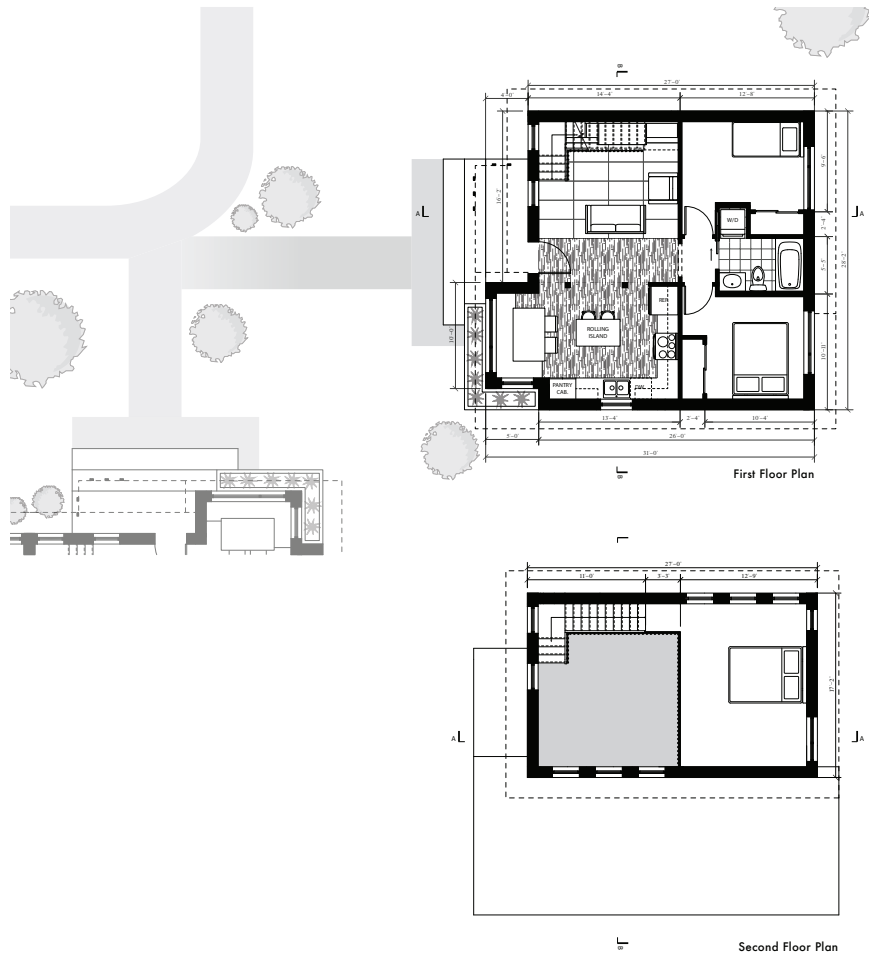
Introduction

The concept was to provide a home that was not only affordable and flexible as a cottage cluster, but also provided a series of built-in storage to maximize the amount of space in a 684 square foot home. Featured beneath the staircase up to the loft is a built-in entertainment center, which includes shelves, cabinets, and a larger shelf for a television. Wooden slats are used along the stairs to divide the upstairs from the downstairs, as well as to bring an organic and comfortable feel to the home. To continue the feel of comfort, this home includes a breakfast nook with a built-in bench that contains underneath storage. With a removable dining table, this area has the ability to be used as a workspace, dining space, or even a reading nook. Just because a home is affordable, does not mean it can't be functional and architectural.

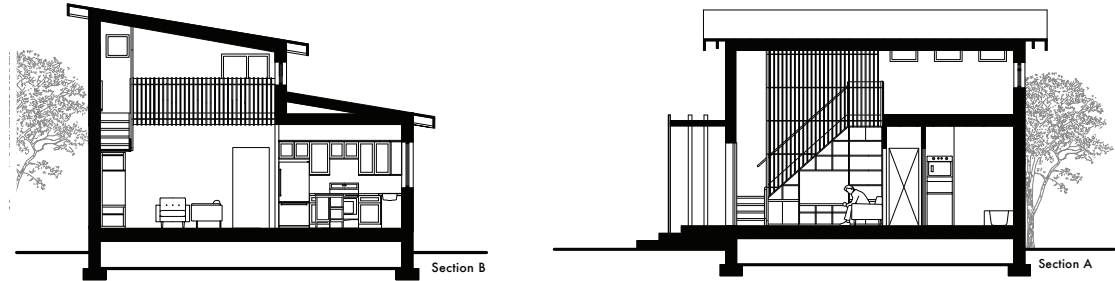
Site Plan



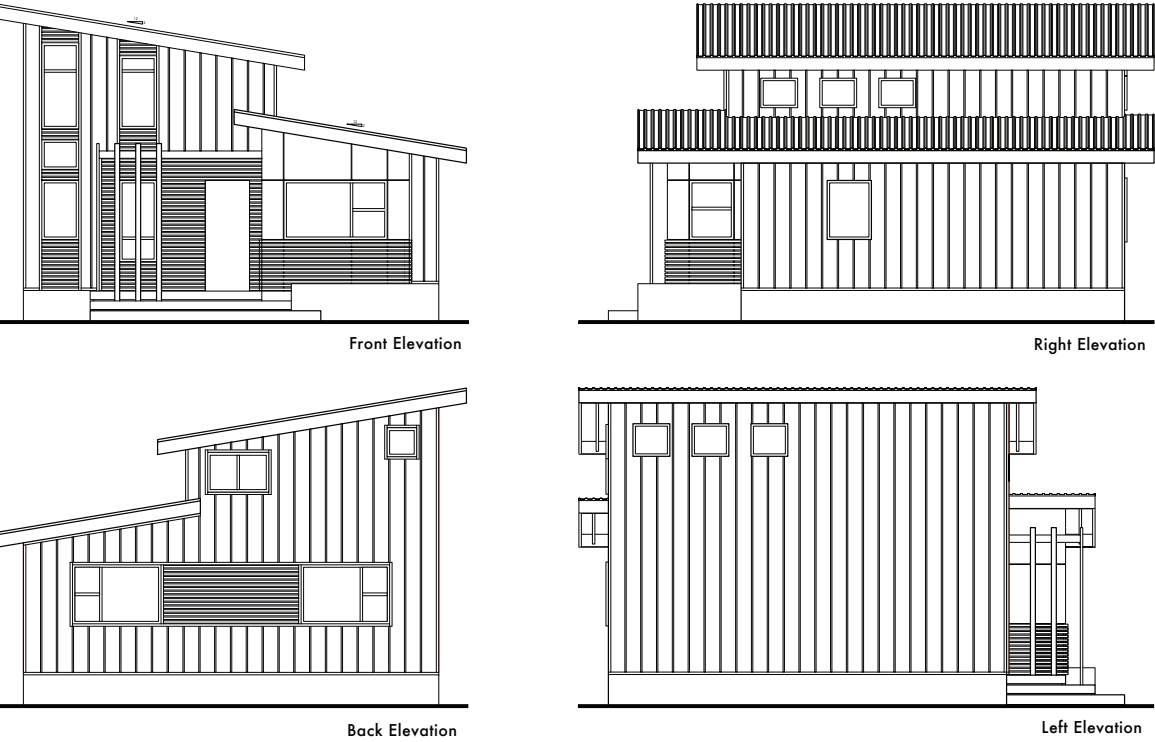
Floor Plans



Sections



Elevations



Model



1'=1/4" Model

Perspectives



Entertainment Center Perspective



Kitchen Perspective



Breakfast Nook Perspective